

SAFETY TIPS FOR

GAS GRILLING

THE NFPA KNOWS

 **7,000** 

The approximate number of gas grill fires each year in the United States.

-National Fire Protection Association

FOR "MR. FIX IT"



DO NOT, under any circumstances, try to modify or repair valves, regulators, or other appliance parts.

Propane cylinders incorporate special components such as valves, connectors, and other parts to keep them safe for use with grills & other propane appliances. Damage to any component can cause a gas leak - **DON'T RISK IT!** Call your propane retailer or a qualified service technician for assistance.

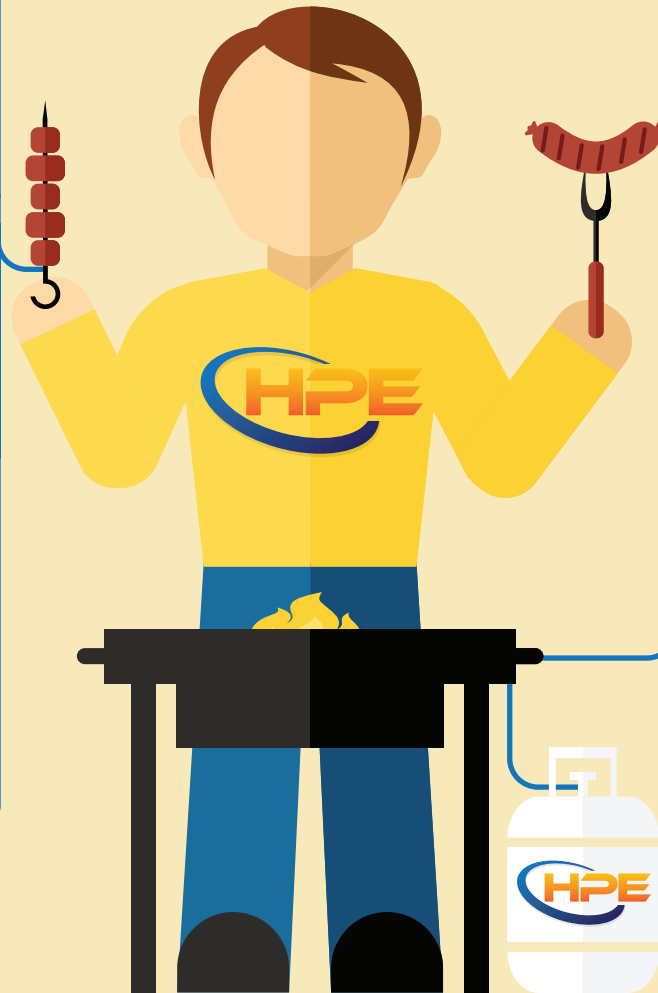


CHECK IT OUT



Before checking to see if your meat is grilled to perfection, you need to examine the line that leads from your propane tank to the grill to ensure there are no cracks. If there are, that could mean a leak that could lead to an explosion. **Turn the gas off and do not use the grill until it is fixed properly!**

It's time to pull the grills out and invite the friends to sit by the pool to enjoy a relaxing cookout while catching up. Unfortunately, gas grills can cause injuries in the form of serious burns.



Gas Grills Are Becoming Safer!

All new gas tanks must be fitted with an over-fill prevention device (OPD). Newer tanks have lobes with 3 prongs, while older ones have 5 prongs. If you have one of the older tanks, make sure you trade it for a new one immediately.

GOT BUBBLES?

Testing for propane leaks is extremely important, and very easy with this simple "bubble" test:

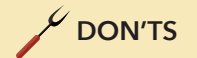


- #1** Apply leak detector solution or thick soapy water to the connection(s) between the cylinder valve & the regulator outlet.
- #2** Slowly open the cylinder valve & watch for bubbles.
- #3** If bubbles appear, close the cylinder valve, tighten the connection, & repeat the process. If bubbles still appear, call your propane retailer immediately.

GUARDED GRILLING



- Follow the grill manufacturer's instructions & keep written materials handy.
- If the igniter no longer works, replace it in accordance with the grill manufacturer's instructions.
- Keep the top of the grill open until you are sure it is lit, even if you have an electronic ignition.
- Cover disconnected hose-end fittings with plastic bags or protective caps to keep a grill clean when it is not in use. Store propane cylinders outdoors in an upright (vertical) position.
- If you smell gas, and it is safe to do so, turn off the cylinder valve, turning it to the right (clockwise). If you are unable to turn off the valve, immediately leave the area & dial 911 or call your local fire department. Before you use the grill again, have a qualified service technician inspect your grill & cylinder.
- Consult a qualified service technician if you are having grill or propane cylinder problems.



- Smoke while handling a propane cylinder.
- Use matches or lighters to check for propane leaks.
- Pour an accelerant such as lighter fluid or gasoline on the grill.
- Allow children to tamper with the cylinder or grill.
- Use, store, or transport propane cylinders near high temperatures (this includes storing spare cylinders near the grill).

Source: Propane Education & Research Council (PERC)



Provided to you by:



High Plains Energy, LLC
Garden City, KS
(620) 276-0506
www.highplainsenergy.net